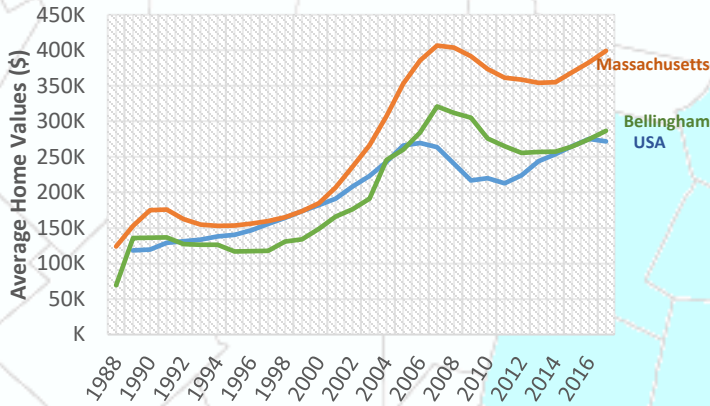
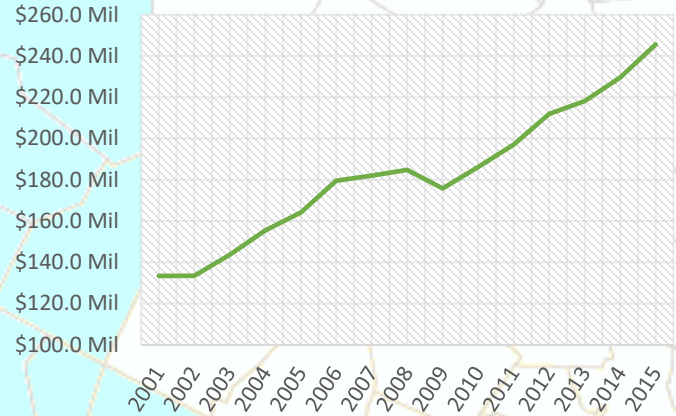


### Rising Home Values



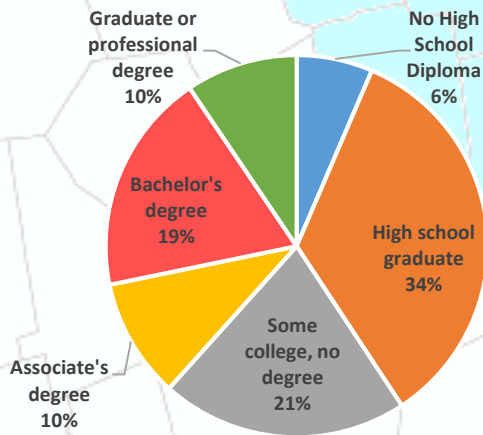
Beyond the year to year averages, in February 2017, the median single family home in Bellingham sold for \$200,000<sup>1</sup>.

### Increasing Payroll



From Q2 2015 to Q2 2016, the payroll for all places of employment in Bellingham was \$253,194,031.<sup>3</sup> As the town has recovered from the recession the payroll has increased significantly in the last few years.

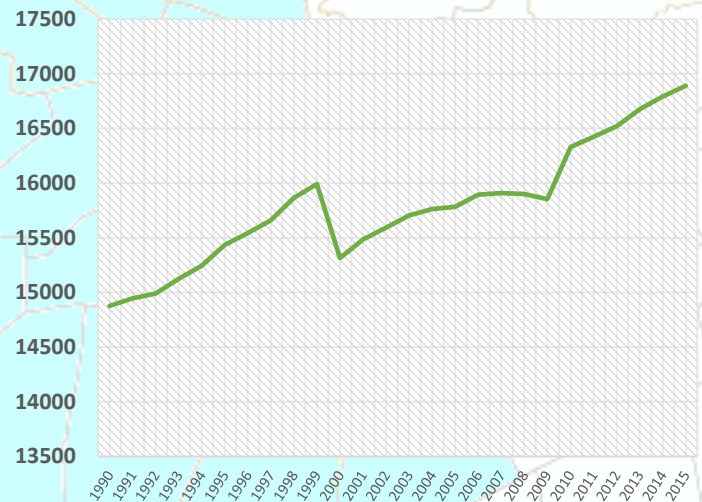
### Highly Educated



2011-2015 ACS (U.S. Census Bureau)

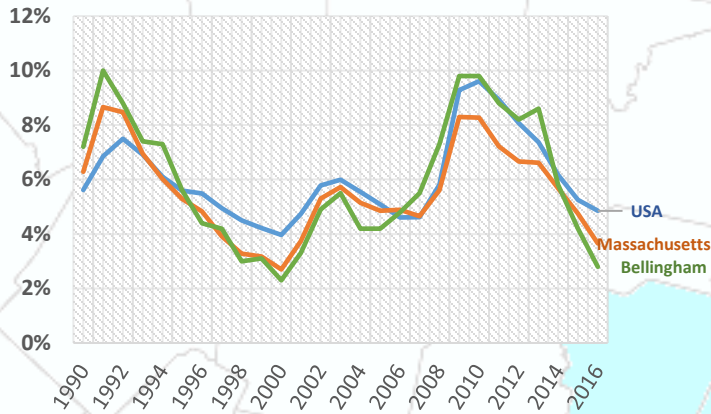
29% of Bellingham residents had a bachelor's degree or higher during the survey.

### Growing Population

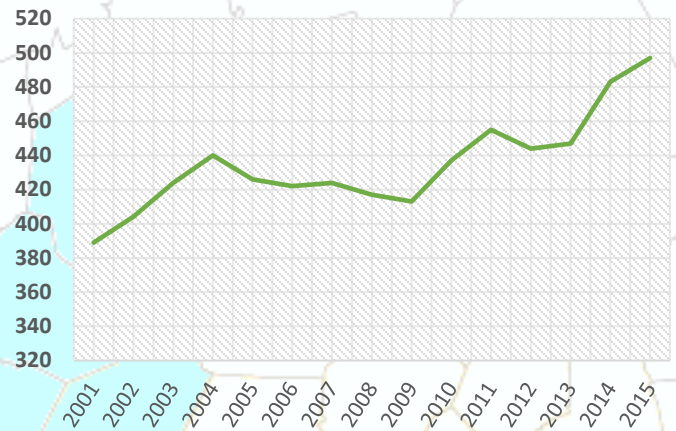


The population of Bellingham has been increasing steadily. In 2000, the population of Bellingham was 15,314 this increased to 16,332 by 2010, and in 2015, the population of Bellingham was estimated to be approximately 16,891.<sup>5</sup>

## Low Unemployment



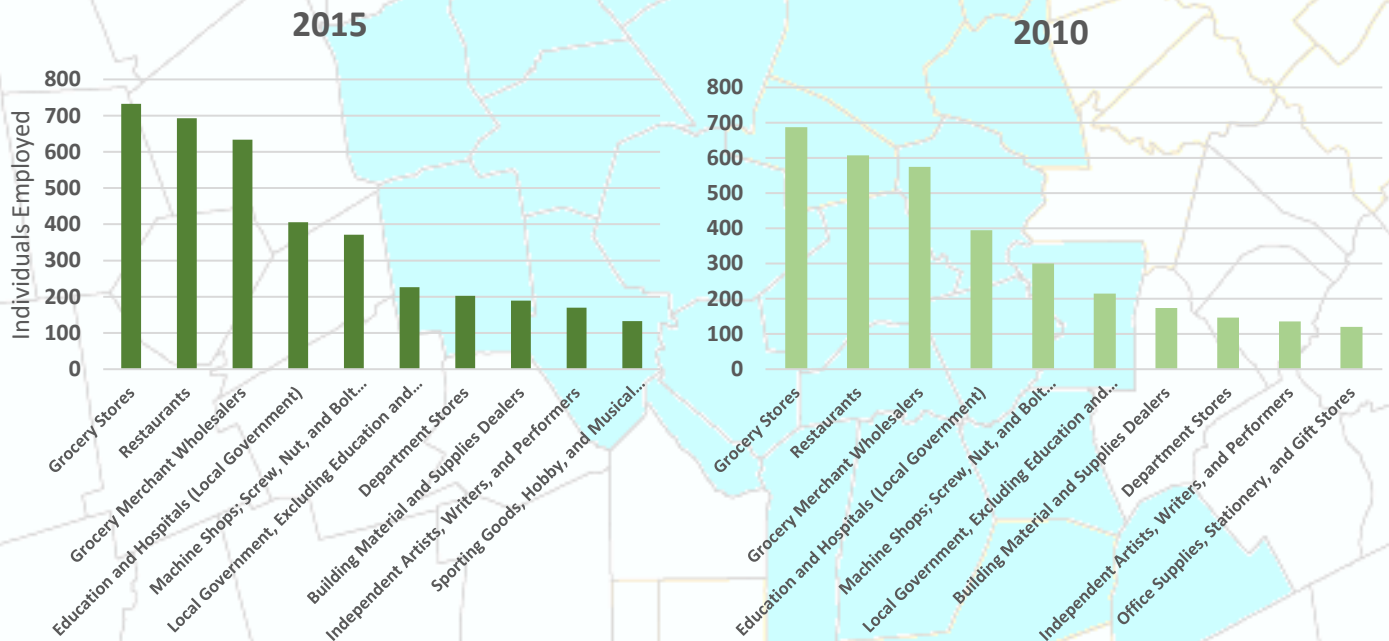
## Expanding Employers



Beyond the year to year averages, in February 2017, the unemployment rate in Bellingham was 4.3%. This is higher than the state and 495/MetroWest regional unemployment rates, which were both 3.4%, but lower than the national unemployment rate of 4.8%<sup>3</sup>

The number of employers in Bellingham has been increasing at a steady rate. In 2001, there were 404 employers in the town, and by Q2 2016 this number had increased to 511.<sup>3</sup>

## Top Ten Industries In Bellingham



**Top Ten Industries data** and analysis conducted by the Public Policy Center at UMass Dartmouth for the 495/MetroWest Partnership in support of the 495/MW Suburban Edge Community Commission utilizing 2014 US Census Bureau Local Employment Dynamics. For more information on these data sets please visit <http://lehd.ces.census.gov/>

### Sources:

- Mass.gov Municipal Databank <http://www.mass.gov/dor/local-officials/municipal-databank-and-local-aid-unit/databank-reports-new.html> (Line graph municipal data)  
 1. The Warren Group <http://www.twgstats.com/tssub/start.asp> 2. Ycharts Average US Home Values [https://ycharts.com/indicators/sales\\_price\\_of\\_existing\\_homes](https://ycharts.com/indicators/sales_price_of_existing_homes)  
 3. Mass.gov Labor and Workforce Development <http://www.mass.gov/lwd/economic-data/> 4. US Census Bureau <https://www.census.gov/> 5. UMASS Donahue Institute <http://www.donahue.umassp.edu/news-events/institute-news/new-population-estimates-for-mass-released-interactive-map-available>